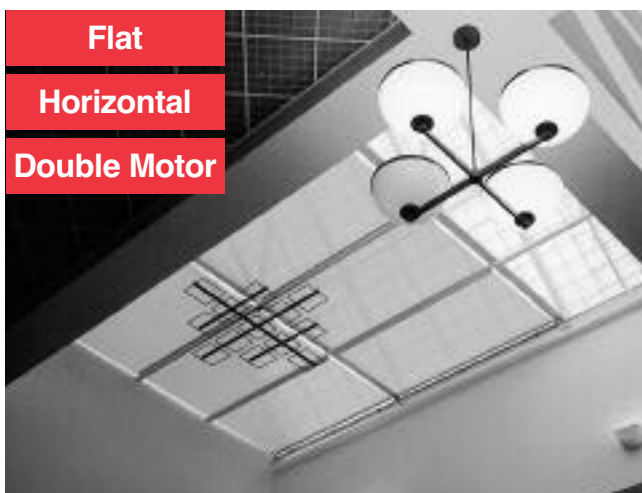


# ElectroShade® Skylight, Atrium and Monumental Shades



Flat

Horizontal

Double Motor



Soft Fold

Top Down

Gravity Drop



Flat

Top Down

Gravity Drop



Flat

Triangular

Double Motor

Bottom Up



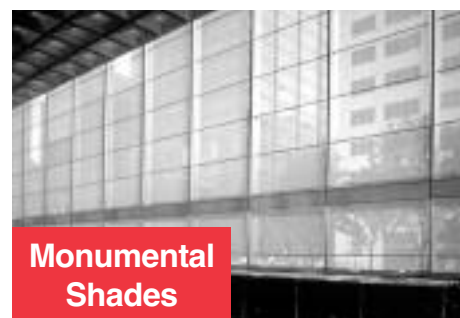
Soft Fold

Single Motor

Bottom Up

The ElectroShade® SkyLighter™ system consists of custom engineered flat and soft-fold shades available as horizontal, sloped or vertical systems in rectangular, triangular (equilateral) or trapezoidal shapes. SkyLighter shades are also available as top down, bottom up or horizontal systems supported by side channels, cables, or both as required. Sloped shade systems and blackout shades may be guided and supported by side channels or overhead cables and augmented by roller bearings or idler rollers for angled or curved windows.

**Monumental/High Bay Shading:** Single shade bands up to 40+ feet wide by 50+ feet high (1,219cm by 1,524cm) and more. Contact your MechoShade representative for more information.



Monumental  
Shades

Monumental shades for windows 10 feet wide by 30 feet high (3m x 9m) or more with aligned stabilizing battens, thus assuring flatness and offset mounting. Whereby two bands per motor, in pocket, offset between mullions.

MechoShade Systems, Inc.  
42-03 35th Street, Long Island City, NY 11101  
Telephone: 718-729-2020  
Fax: 718-729-2941 / 800-899-8081

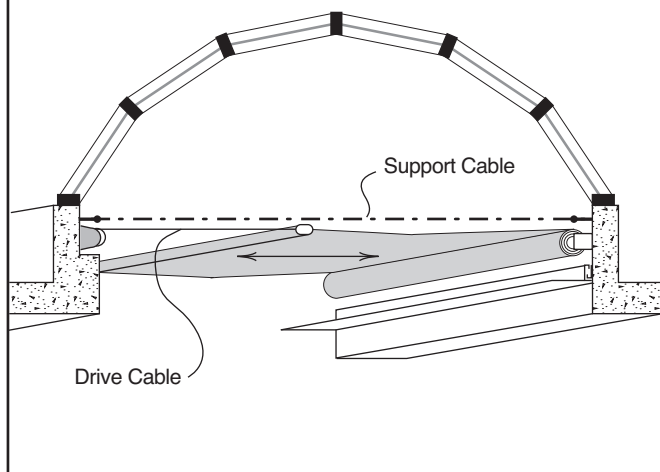
E-mail: [info@mechoshade.com](mailto:info@mechoshade.com)  
Internet Web Site: [www.mechoshade.com](http://www.mechoshade.com)

8.01  
MS2200 - 01/01/08

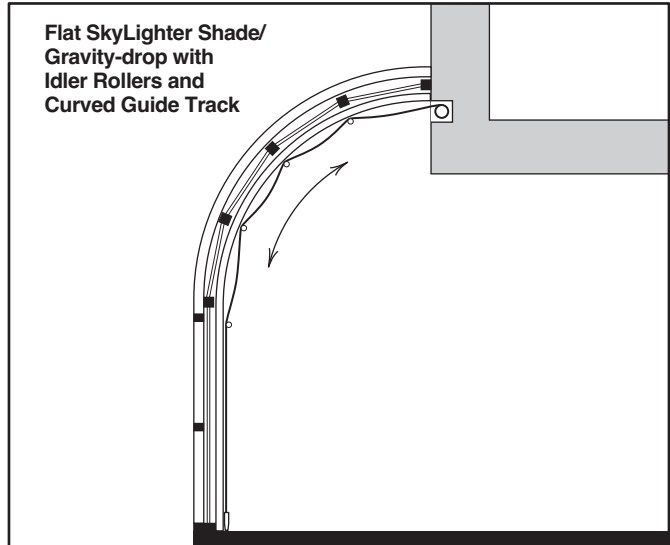


# ElectroShade® SkyLighter™ Systems

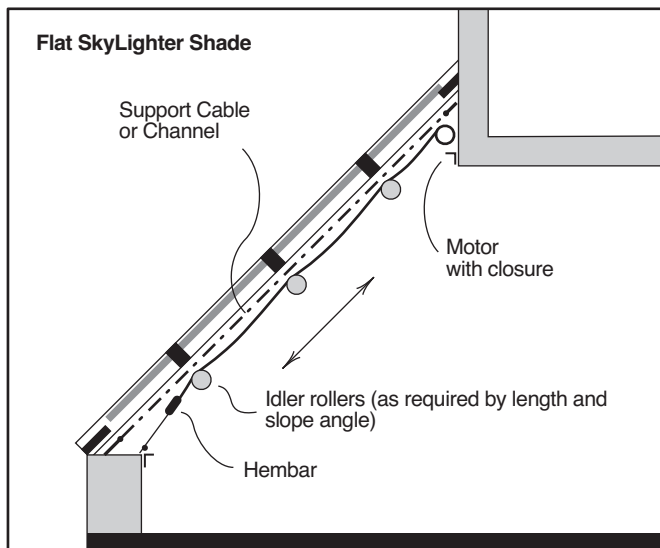
**Horizontal Flat SkyLighter™ Shade.**



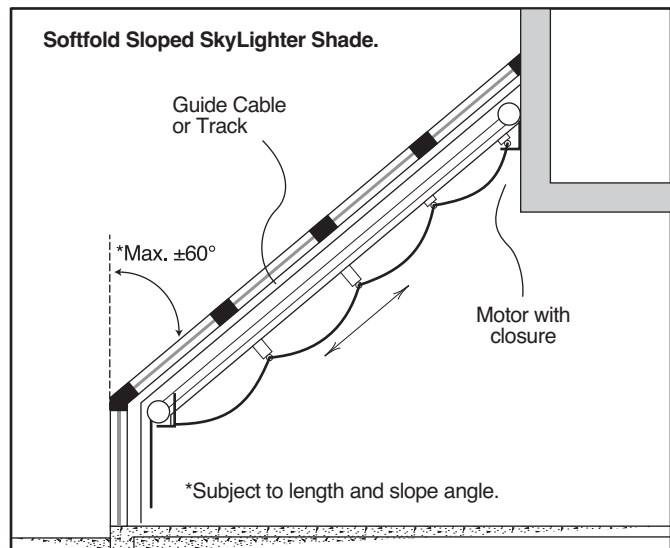
**Flat SkyLighter Shade/  
Gravity-drop with  
Idler Rollers and  
Curved Guide Track**



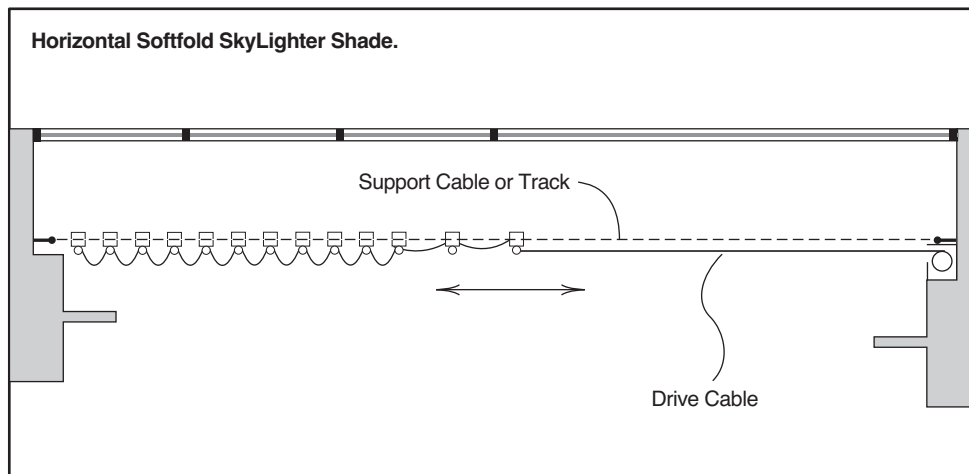
**Flat SkyLighter Shade**



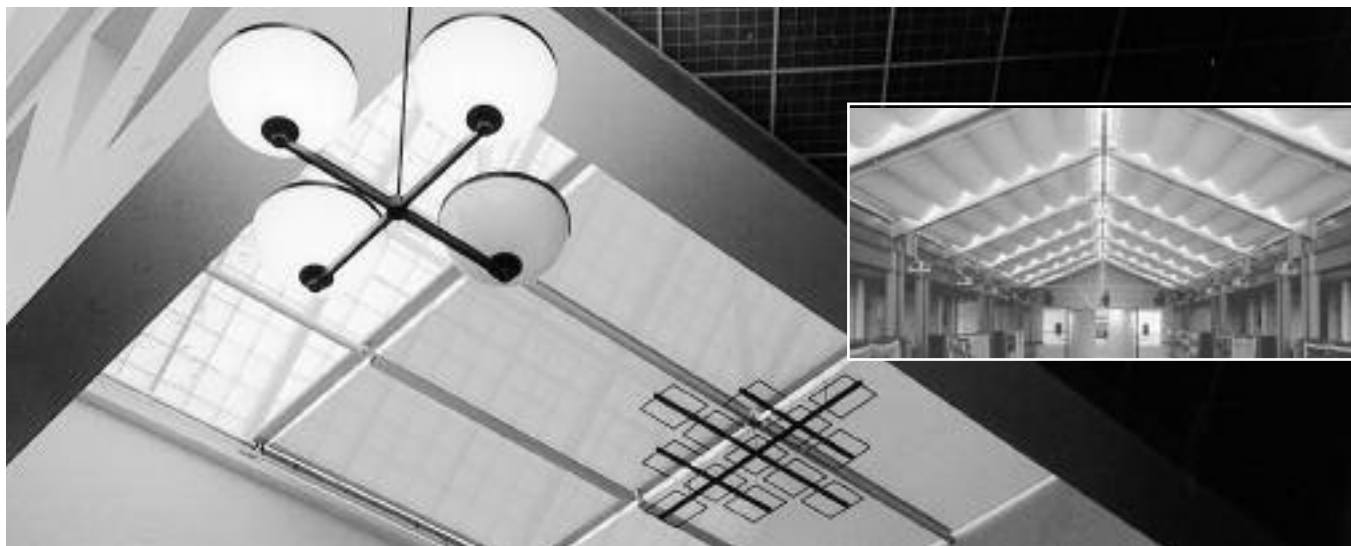
**Softfold Sloped SkyLighter Shade.**



**Horizontal Softfold SkyLighter Shade.**



# Tensioned & Gravity Drop SkyLighter™ Shades



The ElectroShade® SkyLighter™ Shade is a specialized shade system designed for solar protection and room darkening requirements where horizontal, inclined, angled or bottom up type shading is required.

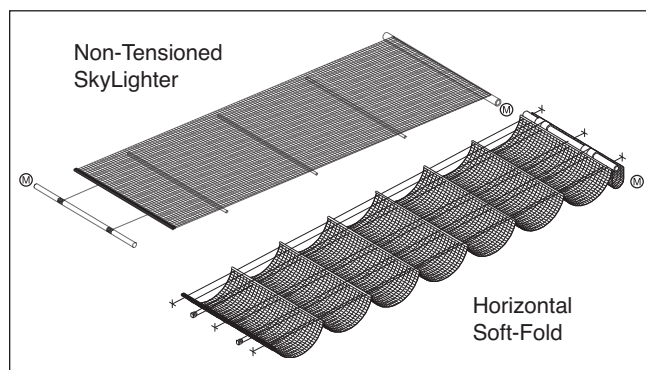
**A Tensioned SkyLighter Roller Shade** is a motorized shade designed for applications that require a taught flat shade like that shown above. The system consists of two synchronized tubular motors and a special electronic control unit to control the tautness of the shade band. One motor is for fabric roll-up, the second motor is for cable take-up. The electronic unit controls each motor independently and maintains a dynamic (moving) tension on the shadeband as well as final tension adjustment thus minimizing fabric sag while the fabric is both moving and stationary. Adjustments to both dynamic and final tension are made via the electronic control. The size and weight of the shade will determine if idler rollers, guide cables and/or guide track are necessary.

**A Motor/Spring SkyLighter Roller Shade** is a single tubular motor and spring system for angled or horizontal shades up to 6 x 8 ft (183 x 245 cm). As the motor in the cable take up tube pulls the shadeband across the opening it creates resistance as it tightens the opposing spring, in the fabric tube, providing shadeband tautness. The size and weight of the shade will determine if idler rollers, guide cables and/or guide track are necessary.

**A Non-Tensioned SkyLighter Soft-Fold Shade** is designed for angled, gravity-drop or horizontal shades which have the elegance of a traditional pleated roman shade.

**Gravity-Drop Soft-Fold Shades:** The system has only a cable take up tube with tubular motor with a fixed pleat at the head rail. The cable take up tube raises the shade by lifting the drive cables attached to the hembar at the bottom of the shade. A separate set of Spacer Cables keep the pleats properly spaced to a series of 1" (25mm) tubes sealed inside the shade-cloth, while a Guide Cable keeps the shade tracking straight.

**Horizontal Soft-Fold Shades:** The system consists of two cable take up tubes, one for each direction of travel, each with its own motor and drive cable and a fixed pleat at the head rail. A separate set of Spacer Cables keep the pleats properly spaced to a series of 1" (25mm) tubes sealed inside the shade-cloth, while a Guide Cable keeps the shade tracking straight.



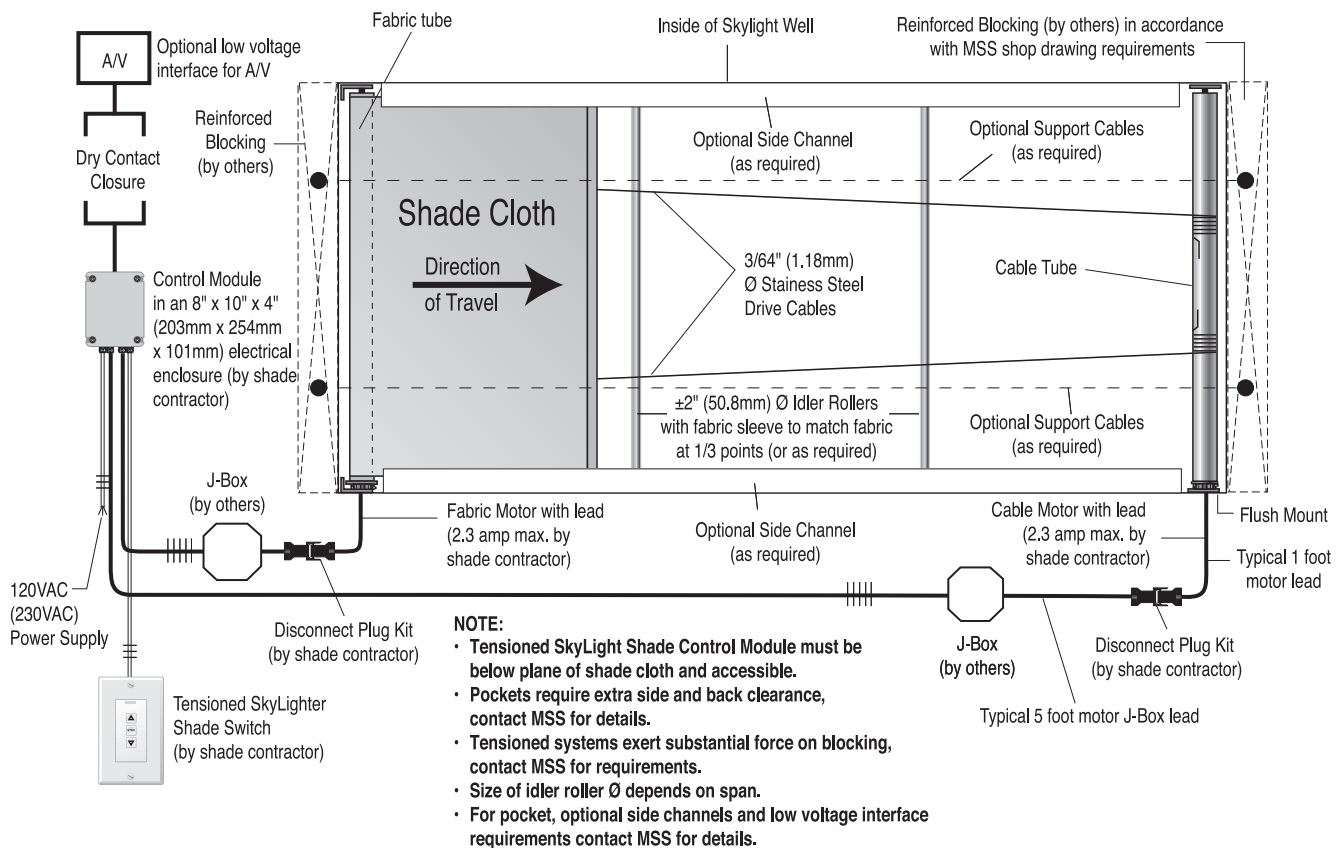
MechoShade Systems, Inc.  
42-03 35th Street, Long Island City, NY 11101  
Telephone: 718-729-2020  
Fax: 718-729-2941 / 800-899-8081

E-mail: [info@mechoshade.com](mailto:info@mechoshade.com)  
Internet Web Site: [www.mechoshade.com](http://www.mechoshade.com)

8.03  
MS2200 - 01/01/08



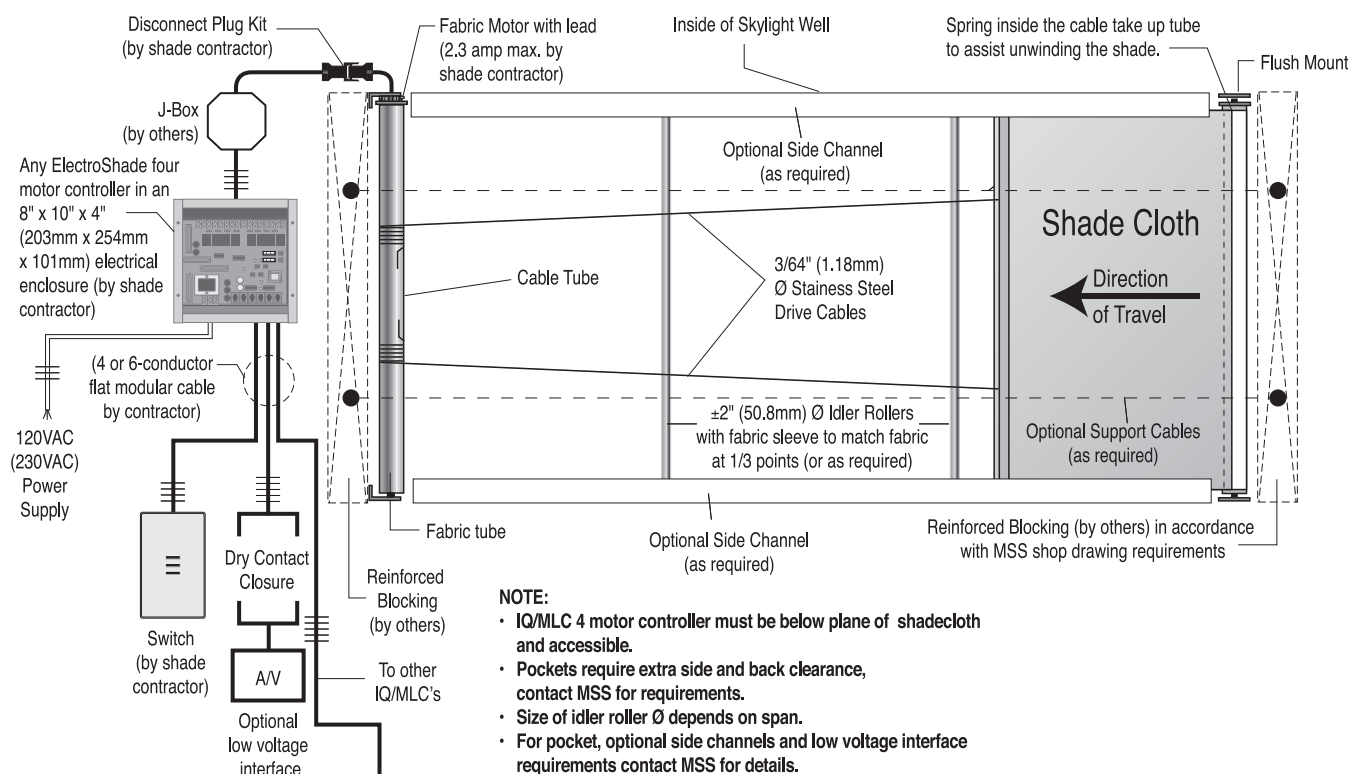
# Typical Double Motor Tensioned SkyLighter™ Shade



**A partial list of components. Items (parts) will vary based on configuration, design and size of the SkyLighter™ Shade.**

1. One Tensioned SkyLighter™ Shade control module in a 8" x 10" x 4" (203mm x 254mm x 101mm) deep electrical enclosure required for each SkyLighter Shade.
2. One Tensioned SkyLighter Shade Switch.
3. One fabric shadeband attached by means of a SnapLoc® spline to a SnapLoc extruded aluminum tube with a tubular directional motor installed inside the tube (motor head and leads exposed).
4. SnapLoc extruded aluminum tube for cable take up with a tubular directional motor installed inside the tube (motor head and leads exposed).
5. One exposed hembar (shipped attached or loose).
6. Two hembar end caps with attachment screws.
7. Two pair of mounting brackets – one for each tube (pair consists of one drive end and one idle end bracket).
8. Two spring loaded idle-end pins.
9. 1/16" (1.5mm) diameter coated stainless steel drive cable.
10. Two 1/4" (6.3mm) diameter x 3" (76.2mm) long (approx.) aluminum drive cable attachment rods.
11. Drive cable attachment screws and washers (for attachment to cable take up tube).
12. Brass, copper or lead cable fittings.
13. Two 5' (1524mm) long j-box leads with mating disconnect plugs (mates with motor lead). Longer leads optional.
14. Optional side channels and/or support cables as required.

# Typical Motor/Spring Tensioned SkyLighter™ Shade



**A partial list of components. Items (parts) will vary based on configuration, design and size of the SkyLighter™ Shade.**

1. One ElectroShade® MLC™/2 or IQ/MLC™ four motor controller, with RS-232 capability, in a 8" x 10" x 4" (203mm x 254mm x 101mm) electrical enclosure.
2. Up to four (4) Switches per controller.
3. One fabric shadeband attached by means of a SnapLoc® spline to a SnapLoc extruded aluminum tube with a tubular directional motor installed inside the tube (motor head and leads exposed).
4. SnapLoc extruded aluminum tube for cable take up with a spring installed inside the tube.
5. One exposed hembar (shipped attached or loose).
6. Two hembar end caps with attachment screws.
7. Two pair of mounting brackets – one for each tube (pair consists of one drive end and one idle end bracket).
8. Two spring loaded idle-end pins.
9. 1/16" (1.5mm) diameter coated stainless steel drive cable.
10. Two 1/4" (6.3mm) diameter x 3" (76.2mm) long (approx.) aluminum drive cable attachment rods.
11. Drive cable attachment screws and washers (for attachment to cable take up tube).
12. Brass, copper or lead cable fittings.
13. One 5ft. (1524mm) long j-box lead with mating disconnect plugs (mates with motor lead). Longer leads optional.
14. Optional side channels and/or support cables as required.

MechoShade Systems, Inc.  
42-03 35th Street, Long Island City, NY 11101  
Telephone: 718-729-2020  
Fax: 718-729-2941 / 800-899-8081

E-mail: [info@mechoshade.com](mailto:info@mechoshade.com)  
Internet Web Site: <http://www.mechoshade.com>

**8.05**  
MS2200 - 01/01/08





# SkyLighter™ Double Motor Tensioned / Flat Shade. 0°- 45°

GUIDE TRACK  
7/8" x 1-1/16"  
(22.2mm x 27mm)

HEMTUBE

**GP HEMTUBE WITH  
GUIDE TRACK DETAIL**  
(OPTION A) \*

GUIDE  
CABLE

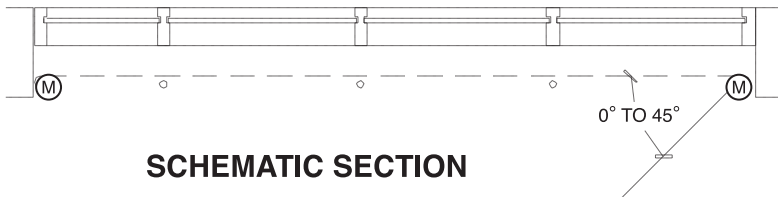
HEMTUBE  
2-3/4" x 1-5/8"  
(69.8mm x 41.2mm)

**GP HEMTUBE WITH  
GUIDE CABLE DETAIL**  
(OPTION B) \*

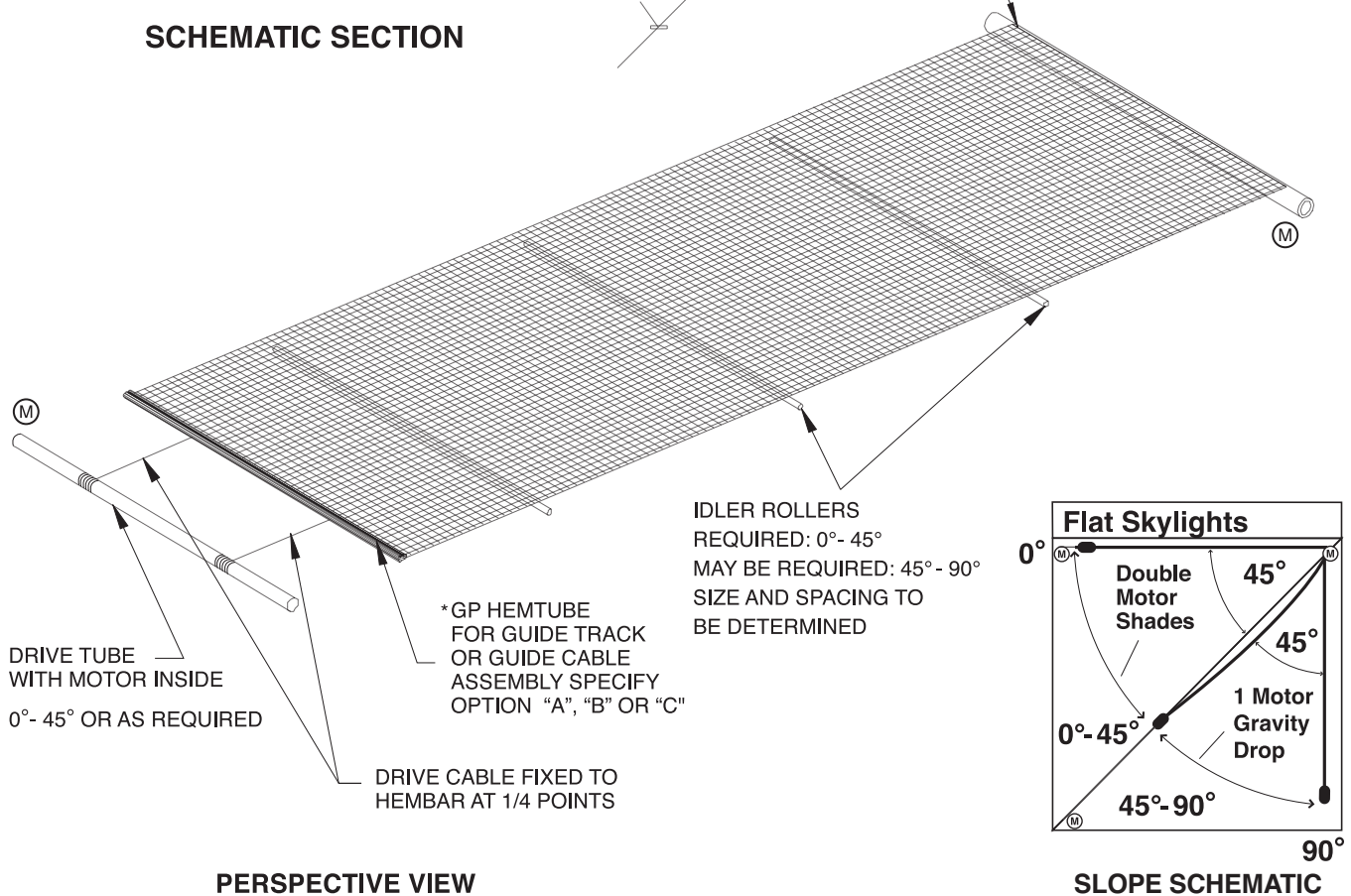
SIDE CHANNEL  
3" x 2" x 3"  
(76.2mm x 50.8 x 76.2mm)

GUIDE  
CABLE

**GP HEMTUBE WITH  
SIDE CHANNEL DETAIL**  
A double motor system  
with Idler Rollers.  
(OPTION C) \*



DRIVE TUBE WITH  
MOTOR INSIDE OR  
SPRING ROLLER  
TUBE AND SHADE  
ASSEMBLY



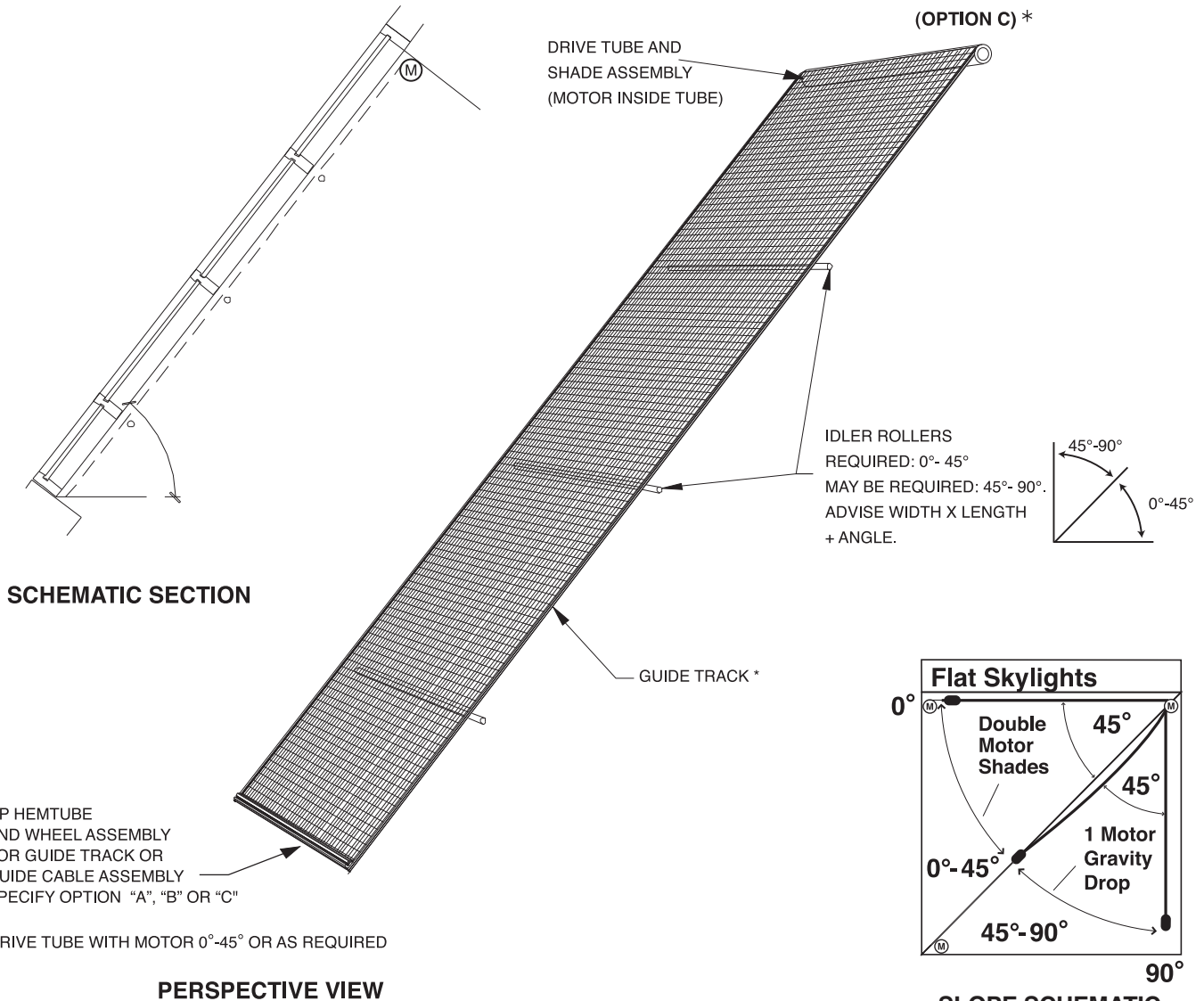
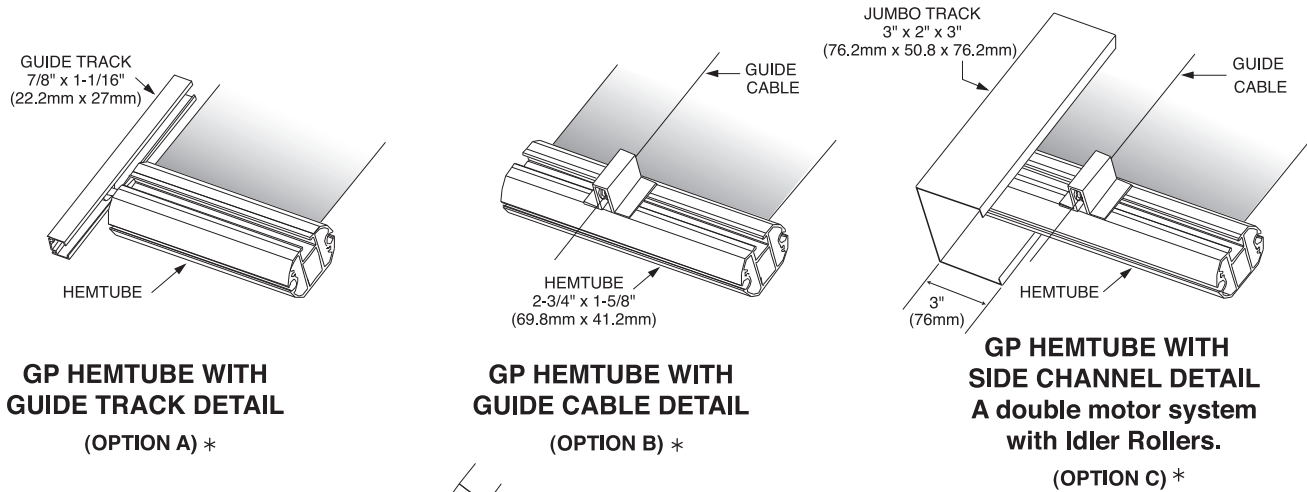
MechoShade Systems, Inc.  
42-03 35th Street, Long Island City, NY 11101  
Telephone: 718-729-2020  
Fax: 718-729-2941 / 800-899-8081

E-mail: [info@mechoshade.com](mailto:info@mechoshade.com)  
Internet Web Site: [www.mechoshade.com](http://www.mechoshade.com)

**8.06**  
MS2200 - 01/01/08



# SkyLighter™ Single Motor Gravity Drop / Flat Shade. 45° - 90°



\* GP HEMTUBE AND WHEEL ASSEMBLY FOR GUIDE TRACK OR GUIDE CABLE ASSEMBLY SPECIFY OPTION "A", "B" OR "C"

DRIVE TUBE WITH MOTOR 0°-45° OR AS REQUIRED

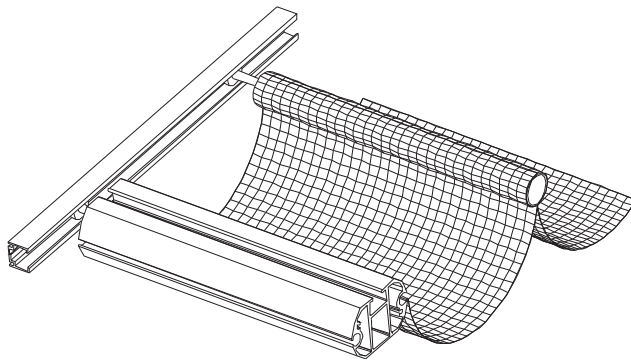
MechoShade Systems, Inc.  
42-03 35th Street, Long Island City, NY 11101  
Telephone: 718-729-2020  
Fax: 718-729-2941 / 800-899-8081

E-mail: [info@mechoshade.com](mailto:info@mechoshade.com)  
Internet Web Site: [www.mechoshade.com](http://www.mechoshade.com)

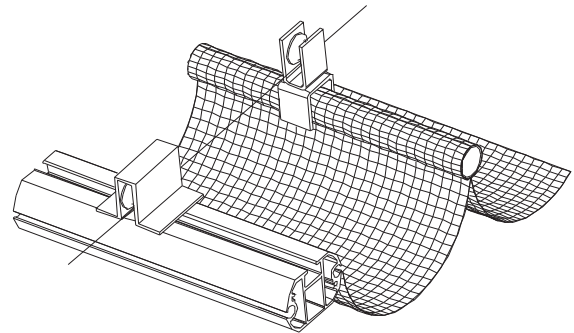
**8.07**  
MS2200 - 01/01/08



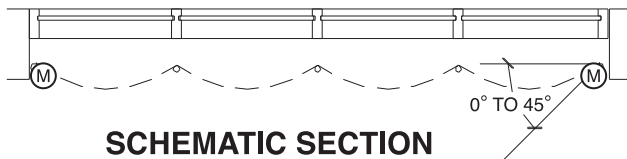
# SkyLighter™ Non-Tensioned / Soft-Fold Shade. 0° - 30°



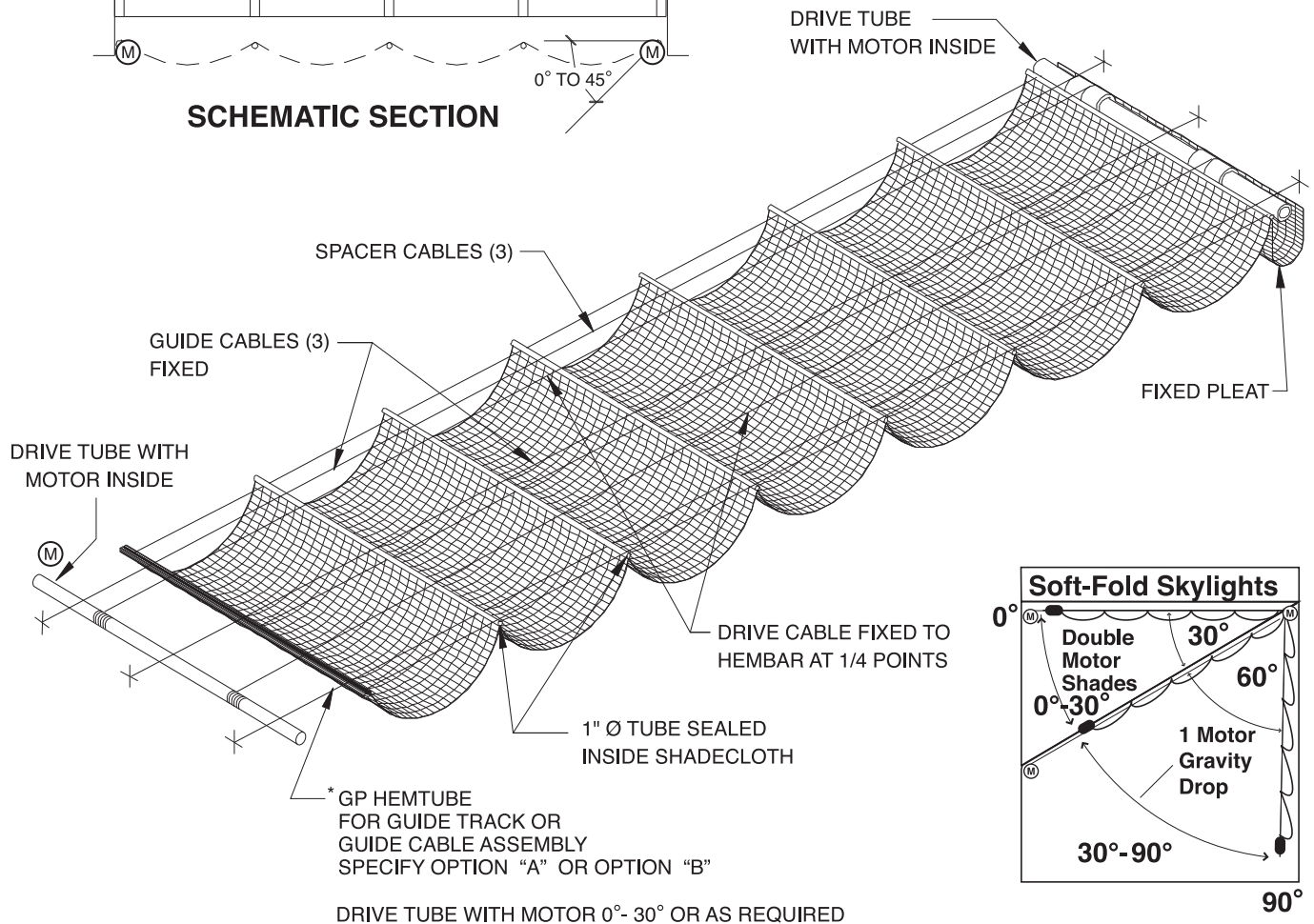
**GP HEMTUBE WITH  
GUIDE TRACK DETAIL**  
(OPTION A) \*



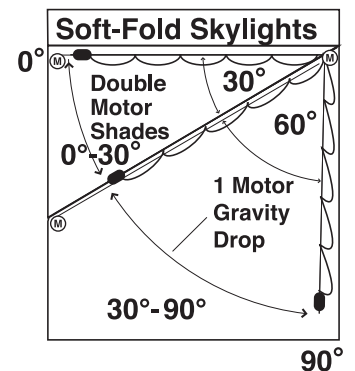
**GP HEMTUBE WITH  
GUIDE CABLE DETAIL**  
(OPTION B) \*



**SCHEMATIC SECTION**



**PERSPECTIVE VIEW**



**SLOPE SCHEMATIC**

MechoShade Systems, Inc.  
42-03 35th Street, Long Island City, NY 11101  
Telephone: 718-729-2020  
Fax: 718-729-2941 / 800-899-8081

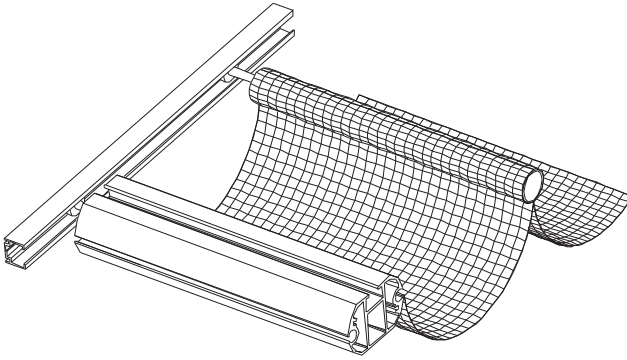
E-mail: [info@mechoshade.com](mailto:info@mechoshade.com)  
Internet Web Site: [www.mechoshade.com](http://www.mechoshade.com)

**8.08**  
MS2200 - 01/01/08

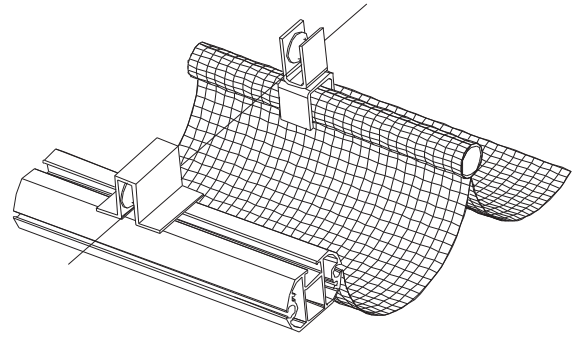




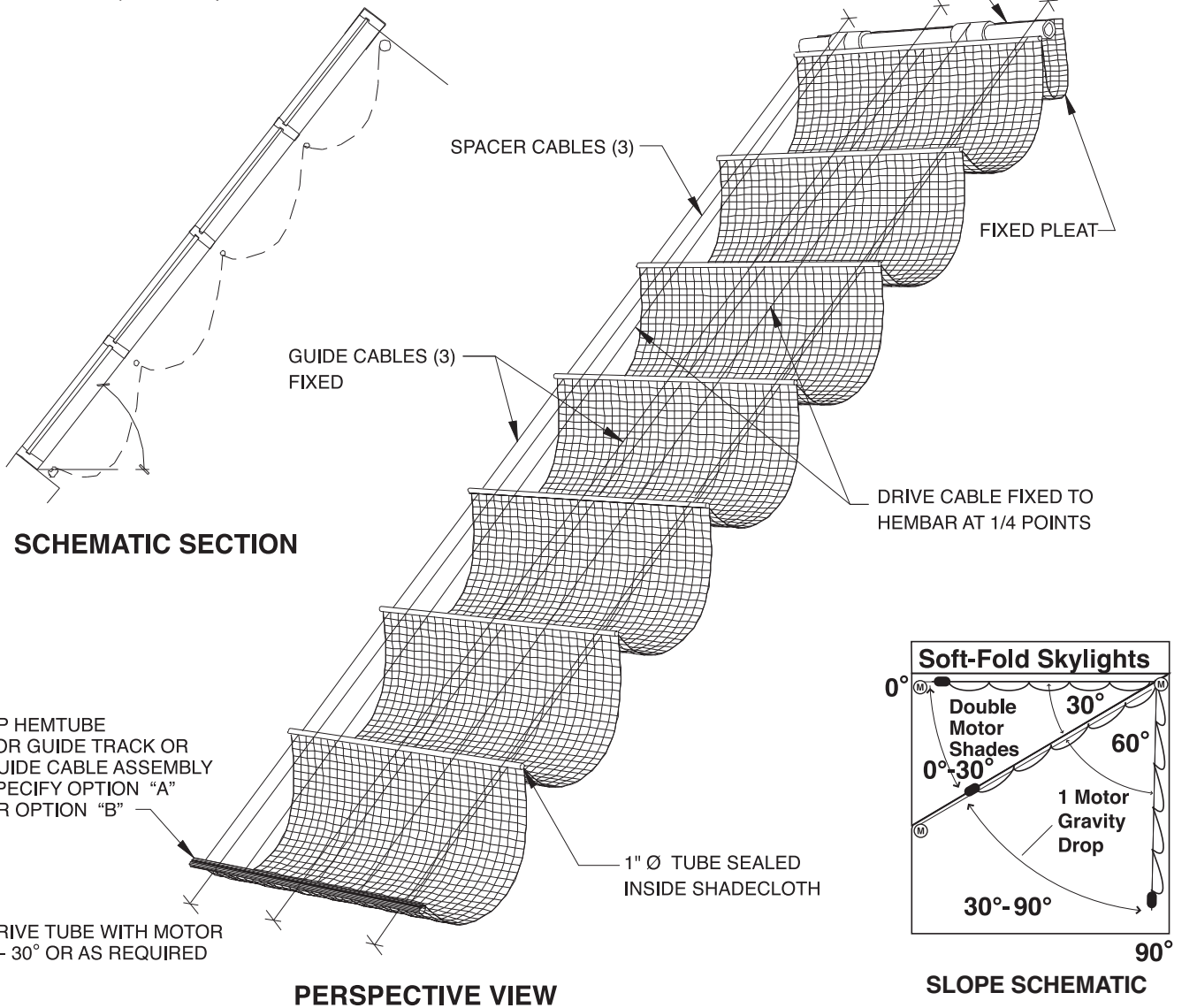
# SkyLighter™ – Gravity Drop / Soft-Fold Shade. 30° - 90°



**GP HEMTUBE WITH  
GUIDE TRACK DETAIL**  
(OPTION A)\*



**GP HEMTUBE WITH  
GUIDE CABLE DETAIL**  
(OPTION B)\*



\* GP HEMTUBE  
FOR GUIDE TRACK OR  
GUIDE CABLE ASSEMBLY  
SPECIFY OPTION "A"  
OR OPTION "B"

DRIVE TUBE WITH MOTOR  
0°- 30° OR AS REQUIRED

MechoShade Systems, Inc.  
42-03 35th Street, Long Island City, NY 11101  
Telephone: 718-729-2020  
Fax: 718-729-2941 / 800-899-8081

E-mail: [info@mechoshade.com](mailto:info@mechoshade.com)  
Internet Web Site: [www.mechoshade.com](http://www.mechoshade.com)

**8.09**  
MS2200 - 01/01/08



[illegible]